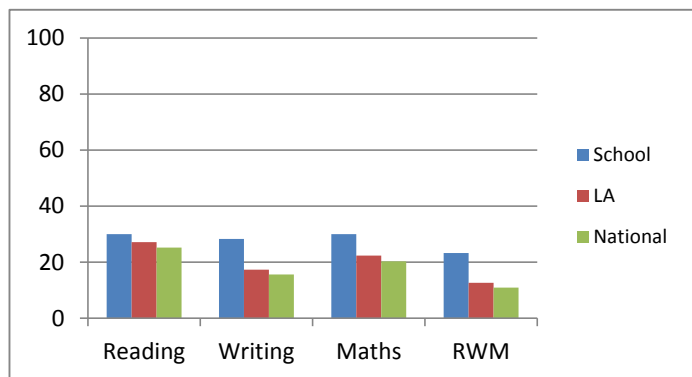
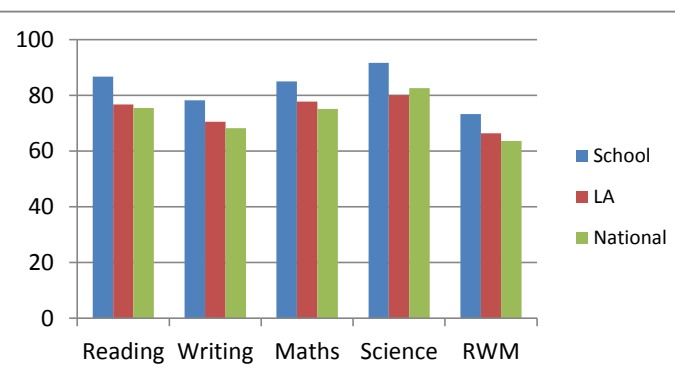


This document has been classified as: Not Protectively Marked

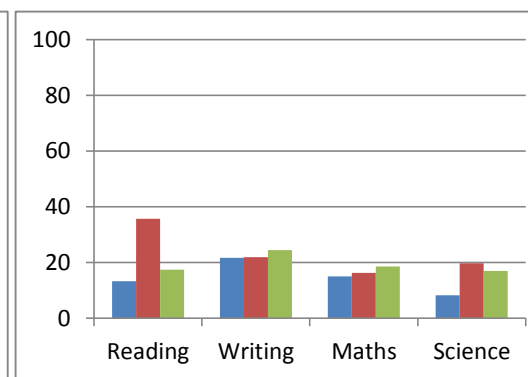
KS1 2017 Cohort details	2017	Reading		Writing		Maths		Science		RWM
		School	30	School	28.3	School	30			School
No of Year 2 pupils: <b>60</b>	% working at greater depth within the expected standard	LA	27.1	LA	17.3	LA	22.3			LA
One pupil = % 1.667		National	25.2	National	15.6	National	20.3			National
		School	86.7	School	78.3	School	85	School	91.7	School
No of boys: 34	% working at or above the expected standard	LA	76.8	LA	70.6	LA	77.8	LA	80.1	LA
No of girls: 26		National	75.5	National	68.2	National	75.1	National	82.6	National
		School	13.3	School	21.7	School	15	School	8.3	
	% working towards the expected standard	LA	35.7	LA	21.9	LA	16.3	LA	19.7	
		National	17.5	National	24.4	National	18.6	National	17	



% working at a greater depth within the expected standard



% working at the expected standard



% working towards the expected standard



23.3
12.7
10.9
73.3
66.4
63.7

---

- School
- LA
- National

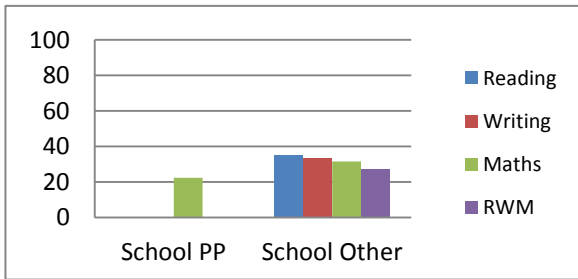
---

---

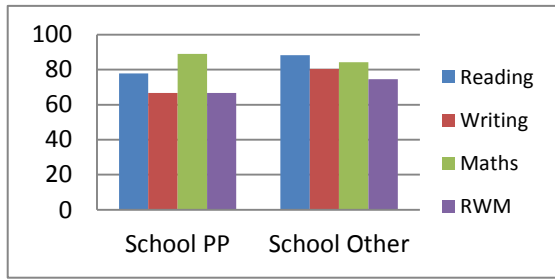
**dard**

## Key Stage 1 - Pupil Premium

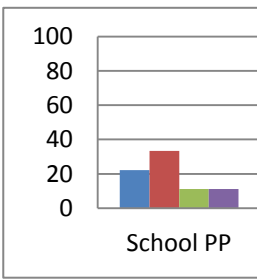
No of PP: 9 No of non PP: 51						
<b>2017</b>	<b>Reading</b>		<b>Writing</b>		<b>Maths</b>	
<b>% working at a greater depth within the expected standard</b>	School PP	0	School PP	0	School PP	22.2
	School Other	35.3	School Other	33.3	School Other	31.4
	<b>School gap</b>	<b>35.3</b>	<b>School gap</b>	<b>33.3</b>	<b>School gap</b>	<b>9.2</b>
	LA PP	17.3	LA PP	11	LA PP	15
	LA Other	32.2	LA Other	20.5	LA Other	26.1
	LA gap	14.9	LA gap	9.5	LA gap	11.1
<b>% working at the expected standard</b>	School PP	77.8	School PP	66.7	School PP	88.9
	School Other	88.2	School Other	80.4	School Other	84.3
	<b>School gap</b>	<b>10.4</b>	<b>School gap</b>	<b>13.7</b>	<b>School gap</b>	<b>-4.6</b>
	LA PP	66.3	LA PP	58.5	LA PP	67.2
	LA Other	82.2	LA Other	76.9	LA Other	83.2
	LA gap	15.9	LA gap	18.4	LA gap	16
<b>% working towards the expected standard</b>	School PP	22.2	School PP	33.3	School PP	11.1
	School Other	11.8	School Other	19.6	School Other	15.7
	<b>School gap</b>	<b>-10.4</b>	<b>School gap</b>	<b>-13.7</b>	<b>School gap</b>	<b>4.6</b>
	LA PP	33.7	LA PP	41.1	LA PP	32.8
	LA Other	17.6	LA Other	23	LA Other	16.6
	LA gap	-16.1	LA gap	-18.1	LA gap	-16.2



**% working at a greater depth within the expected standard**



**% working at the expected standard**

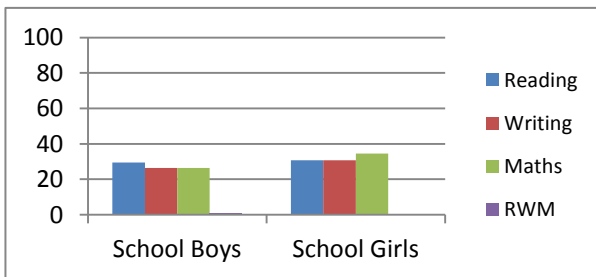


**% working towards the expected standard**

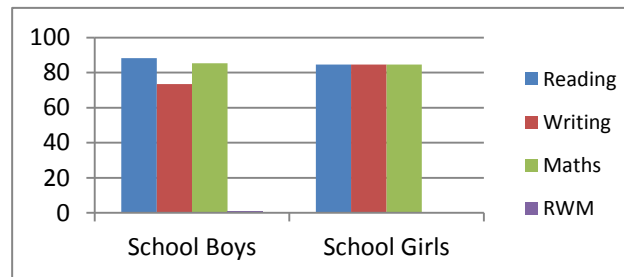
## Key Stage 1 - Gender

No of Boys: 34  
No. of Girls: 26

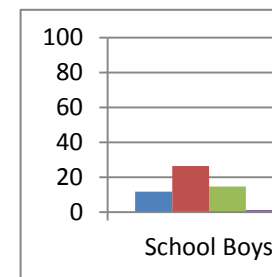
2017	Reading		Writing		Maths	
<b>% working at a greater depth within the expected standard</b>	School Boys	29.4	School Boys	26.5	School Boys	26.5
	School Girls	30.8	School Girls	30.8	School Girls	34.6
	<b>School Gender Gap</b>	<b>1.4</b>	<b>School Gender Gap</b>	<b>4.3</b>	<b>School Gender Gap</b>	<b>8.1</b>
	LA Boys	24.9	LA Boys	13.8	LA Boys	24.3
	LA Girls	29.5	LA Girls	20.8	LA Girls	20.2
	<b>LA Gender Gap</b>	<b>4.6</b>	<b>LA Gender Gap</b>	<b>7</b>	<b>LA Gender Gap</b>	<b>-4.1</b>
<b>% working at the expected standard</b>	School Boys	88.2	School Boys	73.5	School Boys	85.3
	School Girls	84.6	School Girls	84.6	School Girls	84.6
	<b>School Gender Gap</b>	<b>-3.6</b>	<b>School Gender Gap</b>	<b>11.1</b>	<b>School Gender Gap</b>	<b>-0.7</b>
	LA Boys	71.9	LA Boys	63.8	LA Boys	75.8
	LA Girls	82.1	LA Girls	77.8	LA Girls	79.9
	<b>LA Gender Gap</b>	<b>10.2</b>	<b>LA Gender Gap</b>	<b>14</b>	<b>LA Gender Gap</b>	<b>4.1</b>
<b>% working towards the expected standard</b>	School Boys	11.8	School Boys	26.5	School Boys	14.7
	School Girls	15.4	School Girls	15.4	School Girls	15.4
	<b>School Gender Gap</b>	<b>3.6</b>	<b>School Gender Gap</b>	<b>-11.1</b>	<b>School Gender Gap</b>	<b>0.7</b>
	LA Boys	28	LA Boys	36.1	LA Boys	24.1
	LA Girls	17.8	LA Girls	22.1	LA Girls	20
	<b>LA Gender Gap</b>	<b>-10.2</b>	<b>LA Gender Gap</b>	<b>-14</b>	<b>LA Gender Gap</b>	<b>-4.1</b>



**% working at a greater depth within the expected standard**



**% working at the expected standard**

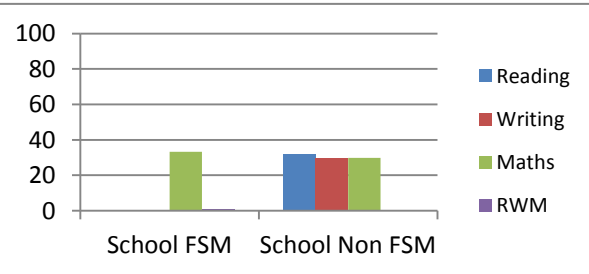


**% working towards the expected standard**

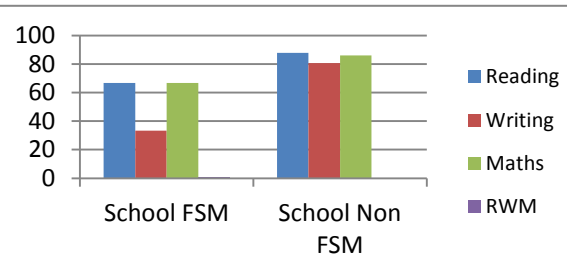
## Key Stage 1 - FSM

No of FSM Pupils: 3  
No. of Non FSM Pupils: 57

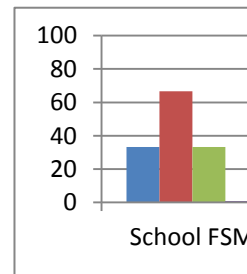
2017	Reading		Writing		Maths	
<b>% working at a greater depth within the expected standard</b>	School FSM	0	School FSM	0	School FSM	33.3
	School Non FSM	31.6	School Non FSM	29.8	School Non FSM	29.8
	School FSM Gap	31.6	School FSM Gap	29.8	School FSM Gap	-3.5
	LA FSM	14.3	LA FSM	9.2	LA FSM	12.2
	LA Non FSM	30.8	LA Non FSM	19.6	LA Non FSM	25.3
	LA FSM Gap	16.5	LA FSM Gap	10.4	LA FSM Gap	13.1
<b>% working at the expected standard</b>	School FSM	66.7	School FSM	33.3	School FSM	66.7
	School Non FSM	87.7	School Non FSM	80.7	School Non FSM	86
	School FSM Gap	21	School FSM Gap	47.4	School FSM Gap	19.3
	LA FSM	62.7	LA FSM	55.1	LA FSM	9.2
	LA Non FSM	80.8	LA Non FSM	75	LA Non FSM	19.6
	LA FSM Gap	18.1	LA FSM Gap	19.9	LA FSM Gap	10.4
<b>% working towards the expected standard</b>	School FSM	33.3	School FSM	66.7	School FSM	33.3
	School Non FSM	12.3	School Non FSM	19.3	School Non FSM	14
	School FSM Gap	-21	School FSM Gap	-47.4	School FSM Gap	-19.3
	LA FSM	37.3	LA FSM	44.9	LA FSM	36.5
	LA Non FSM	19	LA Non FSM	24.8	LA Non FSM	18.1
	LA FSM Gap	-18.3	LA FSM Gap	-20.1	LA FSM Gap	-18.4



**% working at a greater depth within the expected standard**



**% working at the expected standard**

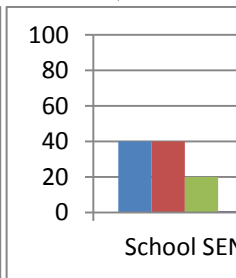
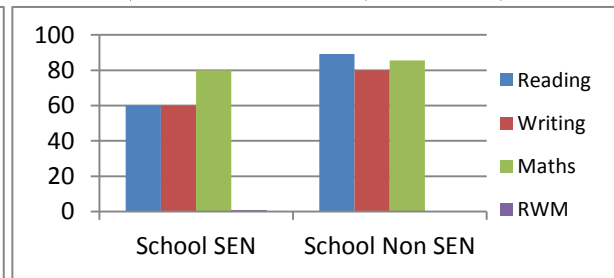
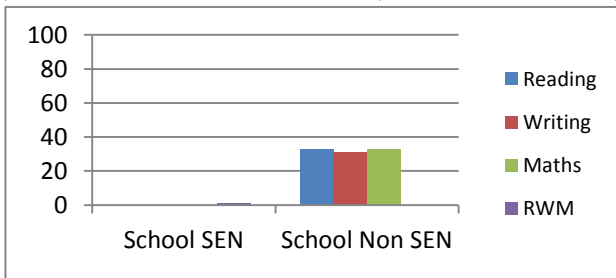


**% working towards the expected standard**

## Key Stage 1 - SEN

No of SEN Pupils: 5  
No. of Non SEN Pupils: 55

2017	Reading		Writing		Maths	
<b>% working at a greater depth within the expected standard</b>	School SEN	0	School SEN	0	School SEN	0
	School Non SEN	32.7	School Non SEN	30.9	School Non SEN	32.7
	School SEN Gap	32.7	School SEN Gap	30.9	School SEN Gap	32.7
	LA SEN	3.9	LA SEN	1.6	LA SEN	2.8
	LA Non SEN	34.1	LA Non SEN	22	LA Non SEN	28.1
	LA SEN Gap	30.2	LA SEN Gap	20.4	LA SEN Gap	25.3
<b>% working at the expected standard</b>	School SEN	60	School SEN	60	School SEN	80
	School Non SEN	89.1	School Non SEN	80	School Non SEN	85.5
	School SEN Gap	29.1	School SEN Gap	20	School SEN Gap	5.5
	LA SEN	32.1	LA SEN	22.5	LA SEN	35.5
	LA Non SEN	90.1	LA Non SEN	84.9	LA Non SEN	90.2
	LA SEN Gap	58	LA SEN Gap	62.4	LA SEN Gap	54.7
<b>% working towards the expected standard</b>	School SEN	40	School SEN	40	School SEN	20
	School Non SEN	10.9	School Non SEN	20	School Non SEN	14.5
	School SEN Gap	-29.1	School SEN Gap	-20	School SEN Gap	-5.5
	LA SEN	67.4	LA SEN	76.9	LA SEN	64
	LA Non SEN	9.9	LA Non SEN	15.1	LA Non SEN	9.8
	LA SEN Gap	-57.5	LA SEN Gap	-61.8	LA SEN Gap	-54.2



**% working at a greater depth within the expected standard**

**% working at the expected standard**

**% working towa**