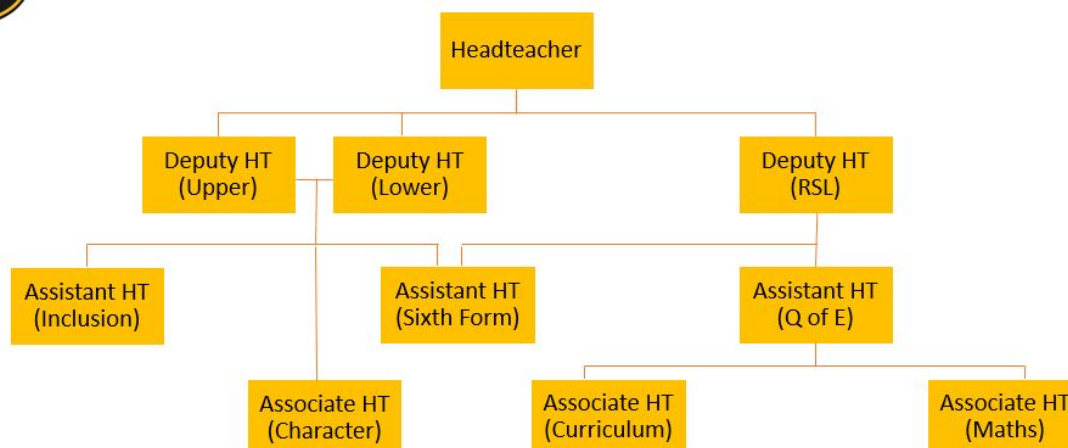




Park View School- Leadership Structure



Role	Description of Role
Headteacher- Mr A Finley	The Headteacher will set the vision and instil the values of the school into school life. The role will hold the Senior Leadership Team to account and will shape the direction of the school and the School Improvement agenda. The Headteacher will work closely with governors and external partners to secure success for the school and will lead the SLT and all staff to respond positively to all challenges faced. High expectations will be set and rigorous self evaluation will be applied alongside precise and swift improvement. The role will take direct responsibility for Self Evaluation and Improvement Planning. The role will also encompass the leadership of the school support leadership team.
Deputy Headteacher (Lower School)- Mrs P Hall	This main function of this role is to lead and manage the Lower School at North Lodge. Responsibilities in this role are to manage behaviour, achievement, attendance and character education. This role is also responsible for managing the Pupil Premium funding to ensure that our most disadvantaged are championed by the leader of the school who has oversight of their whole education.
Deputy Headteacher (Upper School)- Mrs A Moore	This main function of this role is to lead and manage the Upper School at Church Chare. Responsibilities in this role are to manage behaviour, achievement, attendance and character education. This role is also responsible for managing the Pupil Premium funding to ensure that our most disadvantaged are championed by the leader of the school who has oversight of their whole education.
Deputy Headteacher (Raising Standards Leader)- Mrs C Heslop	This role will be one that runs across the whole school, 11-18. The role primarily includes the oversight of Quality Assurance as well as responsibility for teaching and learning and curriculum priorities. This role will be the Link DHT for the Core Curriculum (Maths, English and Science). The position will also have line management responsibility for the AHT Quality of Education, AHT Sixth Form and two Associate Headteachers to form a Raising Standards Team with a direct remit to improve the quality of overall education at Park View.
Assistant Headteacher (Sixth Form)- Mr J Cooper	This role will take ownership of academic achievement and pastoral care in the Sixth Form. Working closely with both pastoral and academic teams, the main remit will be to improve outcomes for all Sixth Form students. The role is also responsible for leading the Sixth Form Pastoral Team and an integral

	part of the Raising Standards Team.
Assistant Headteacher (Inclusion)- Mrs K Tate	This role is focused upon supporting students and staff from all backgrounds to achieve their full potential. Specifically responsible for student and staff wellbeing, SEN and students facing safeguarding and Child Protection issues, this role is hugely important and one that requires experience and the ability to establish good working relationships with staff and students alike. This role reports directly into the DHT's responsible for Upper and Lower School and has line management responsibilities for the SENDCO. This role is a key position within the Pastoral Leadership of the school.
Assistant Headteacher (Quality of Education)- Mr J Jarvis	This role will focus energy on improvement across the school in terms of teaching and learning and quality of the whole school curriculum. The primary function is to contribute to improve teaching of across the school, identify CPD and improvement areas and monitor, review and support middle leaders to create exciting curriculum areas that deliver progress for all in terms of knowledge, qualities and skills of students. This role will create visionary policy and outstanding practice in the school and help make Park View a centre for excellence in teaching and learning. The role will form part of the Raising Standards Team led by DHT Raising Standards Leader.
Associate Headteacher (Character)- Mrs L Price	This seconded post will be part of the Pastoral Leadership of the school and will have the specific remit of overseeing Character Education at Park View. The role will contribute to Citizenship and our wider Edge programme to ensure the students at Park View are equipped with the skills necessary to access employment and further study beyond Park View.
Associate Headteacher- (Super/Extra Curriculum) Ms H. Keighley	The Super and Extra Curriculum at Park View will be overseen by this person. They are responsible for coordinating both programmes of study and will champion achievement, stretch, challenge and participation in a vast range of activities and opportunities inside and outside the classroom.
Associate Headteacher- (Mathematics) Ms. H. Fawcett	This SLT seconded role will allow extra capacity for rapid Maths improvement. The role will support transformation of leadership of Maths, curriculum development and improved outcomes. The role will work very closely with existing Maths leaders to have an impact in the classroom and increase numeracy skills across the student body.